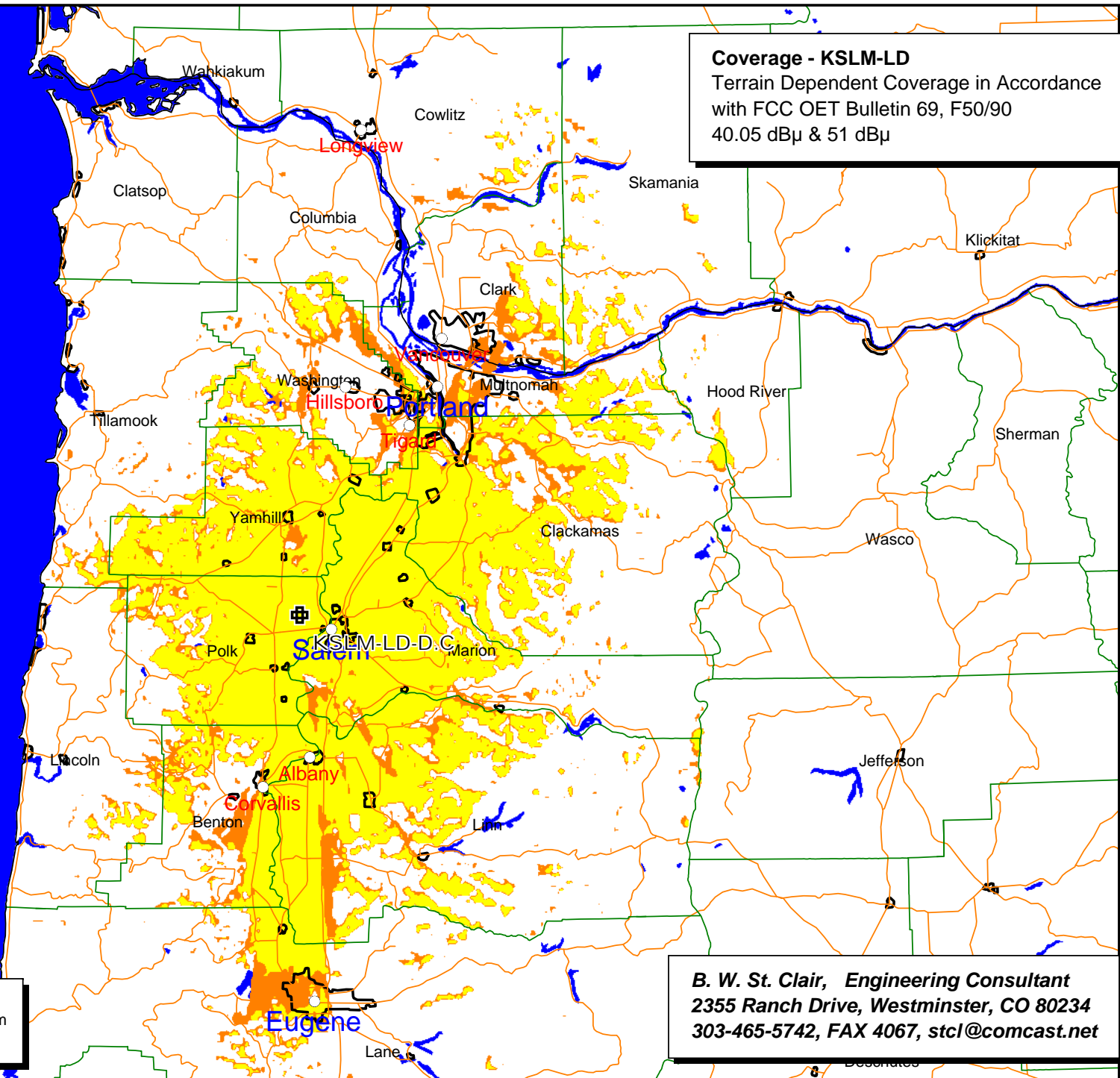


KSLM-LD-D.C

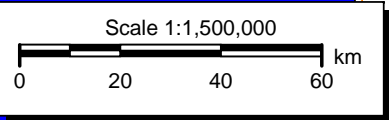
BDISDTL20090609AAB
Latitude: 44-58-38 N
Longitude: 123-08-29 W
ERP: 15.00 kW
Channel: 27
Frequency: 551.0 MHz
AMSL Height: 359.0 m
Elevation: 331.0 m
Horiz. Pattern: Omni
Vert. Pattern: Yes
Elec Tilt: 0.0
Prop Model: Longley/Rice
Climate: Cont temperate
Conductivity: 0.0050
Dielec Const: 15.0
Refractivity: 301.0
Receiver Ht AG: 10.0 m
Receiver Gain: 0 dB
Time Variability: 90.0%
Sit. Variability: 50.0%
ITM Mode: Broadcast

Coverage - KSLM-LD
Terrain Dependent Coverage in Accordance
with FCC OET Bulletin 69, F50/90
40.05 dBμ & 51 dBμ



- > 51.0 dBμ
- 41.0 - 51.0

04/23/2010



B. W. St. Clair, Engineering Consultant
2355 Ranch Drive, Westminster, CO 80234
303-465-5742, FAX 4067, stcl@comcast.net